



EFG

ÉQUIPEMENT DE FORAGE DU QUÉBEC

ROCK TOOLS PART LIST





ROCKY-W Hammer



Everdigm Rocktools ROCKY-W hammer is ideal for deep-hole drilling such as water-well, Geo-thermal. It has optimized drilling by increasing the air consumption.

Piston is heavier than Rocky M hammer also, it has a longer stroke.

The hammer has few parts than other hammer allowing an easy maintenance and servicing. Everdigm Rocktools ROCKY-W hammer will assure of high performance, exceptional reliability and dependable support.

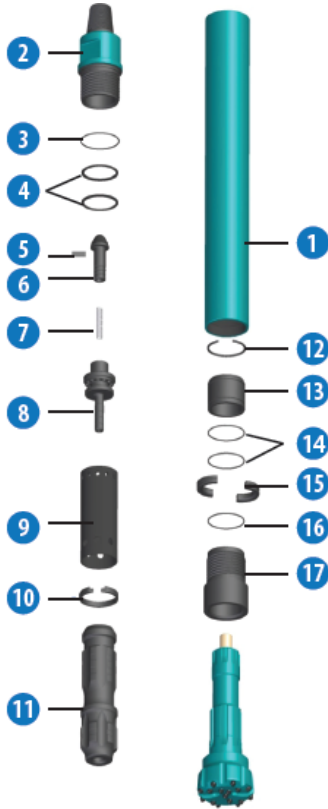
- Rocky W hammer has optimized air-flow mechanism for deep-hole drilling.
- Proven forged material for piston prevents its breakage.
- Outstanding engineering and precise manufacturing.
- Efficient chamber volumes and piston cycle to have the best performance.
- Best alloy steel and heat treatment for longer life time.





SPECIFICATIONS

ROCKY-W Hammer



No	Parts	Q'ty
1	Wear sleeve	1
2	Black head	1
3	O-Ring	1
4	Disc spring	2
5	Choke	1
6	Check valve	1
7	Coil spring	1
8	Air Distributor	1
9	Cylinder	1
10	Cylinder Retain Ring	1
11	Piston	1
12	Piston Retain Ring	1
13	Bearing	1
14	O-Ring	2
15	Bit retain ring	1
16	O-Ring	1
17	Chuck	1

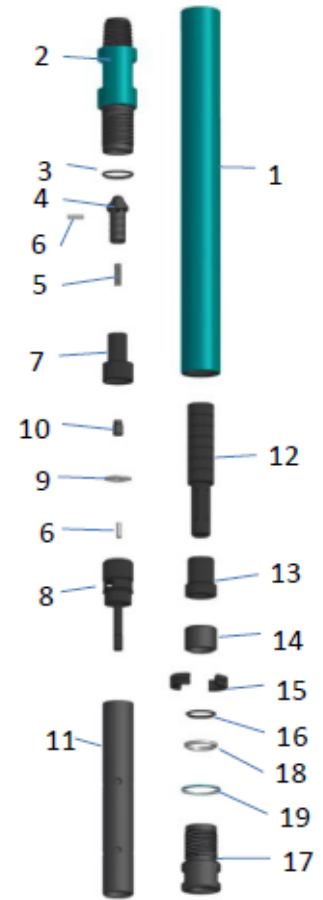
	O.D.	Total Length	Piston Weight	Back Head Thread	Shank	Bit Size
ROCKY 2"	62mm	778mm	2.2kg	1 1/2 T.P.F PIN	BULROC-2	76-101mm
ROCKY 3"	78mm	826mm	5.7kg	2 3/8 API REG PIN	IR3.5	89-101mm
ROCKY 4"	98mm	888mm	9.2kg	2 3/8 API REG PIN	DHD340,QL40,SD4	101-127mm
ROCKY 5"	117mm	1037mm	14.8kg	3 1/2 API REG PIN	DHD350, QL50	127-152mm
ROCKY 6"	139mm	1029mm	22.2kg	3 1/2 API REG PIN	DHD360,QL60,SD6	165-202mm
ROCKY 8"	182mm	1269mm	54.9kg	4 1/2 API REG PIN	DHD380,QL80,SD8	202-254mm

	100psi	150psi	200psi	250psi	300psi	350psi
ROCKY 2"	27cfm	49cfm	76cfm	106cfm	-	-
ROCKY 3"	70cfm	95cfm	145cfm	200cfm	250cfm	-
ROCKY 4"	159cfm	215cfm	303cfm	406cfm	507cfm	615cfm
ROCKY 5"	234cfm	306cfm	423cfm	565cfm	686cfm	860cfm
ROCKY 6"	262cfm	367cfm	526cfm	687cfm	860cfm	982cfm
ROCKY 8"	366cfm	509cfm	794cfm	942cfm	1266cfm	1310cfm



ROCKY-W2 Hammer

Item	Description	BULROC2 Part Number	BULROC2 BOX Part Number	EA
0	HAMMER	RT410-0393	RT410-0323	1
1	WEAR SLEEVE	RT410-0394		1
2	BACK HEAD	RT410-0395	RT410-0324	1
3	O-RING	S8130311		1
4	CHECK VALVE	RT410-0005		1
5	COIL SPRING	RT410-0182		1
6	PLUG	RT410-0026		2
7	AIR DISTRIBUTOR	RT410-0396		1
8	GUIDE	RT410-0397		1
9	RETAINER VALVE	RT410-0398		1
10	CENTER FLANGE	RT410-0399		1
11	CYLINDER	RT410-0400		1
12	PISTON	RT410-0401		1
13	BEARING	RT410-0402		1
14	SPACER	RT410-0403		1
15	BIT RETAIN RING	RT410-0404		1
16	O-RING	S8130301		1
17	CHUCK	RT410-0405		1
18	SEAL	RT410-0406		1
19	WEAR RING	RT410-0407		1
Length		778mm	30.63"	
Piston Weight		1.8kg	3.97lb	
Total Weight (Approx)		16.7kg	36.82lb	



GENERAL SPECIFICATION	
Shank	BULROC2
Backhead Therad	1-1/2" T.P.F PIN , RD40 , RD50
Outside Diamater	63mm
Working Pressure	6.9bar-17.2bar
Stroke	102mm

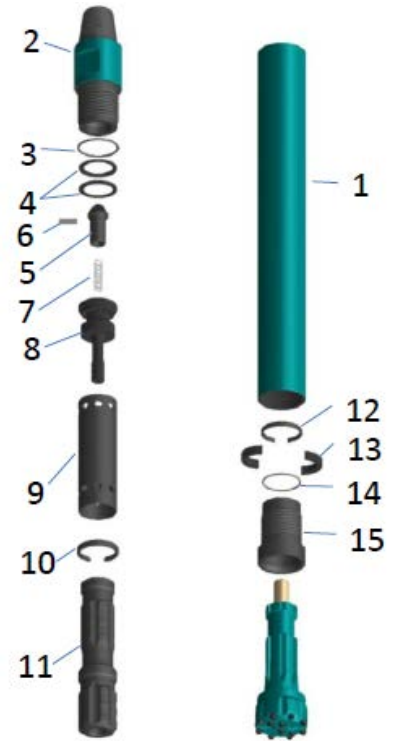
AIR CONSUMPTION	
Pressure	CFM(m ³ /min)
100psi /6.9bar	25(0.7)
150psi /10.35bar	48(1.3)
200psi /13.8bar	75(2.1)
250psi /17.2bar	105(2.9)

D		Flusing hole No		Buttons				Design	Part No.	Product Code.
mm	in	Front	Gauge	ConCave NoXSize	Front NoXSiz	Gauge NoXSiz	Side NoXSiz			
BULROC 2 Shank										
76	3"	2	-	-	4x11	6x11	-	SP	RT320-0070	N076BULROC2SFF2
89	3 1/2"	2	-	-	4x11	8x12	-	SP	TBA	N089BULROC2SFF2



ROCKY-W3 Hammer

Item	Description	I.R 3.5 Part Number	EA
0	HAMMER	RT410-0014	1
1	WEAR SLEEVE	RT410-0015	1
2	BACK HEAD	RT410-0016	1
3	O-RING	S8132291	1
4	DISC SPRING	RT410-0017	2
5	CHECK VALVE	RT410-0018	1
6	PLUG	RT410-0026	1
7	COIL SPRING	RT410-0183	1
8	AIR DISTRIBUTOR	RT410-0019	1
9	CYLINDER	RT410-0020	1
10	CYLINDER RETAIN RING	RT410-0021	1
11	PISTON	RT410-0022	1
12	PISTON RETAIN RING	RT410-0023	1
13	BIT RETAIN RING	RT410-0024	1
14	O-RING	S8131401	1
15	CHUCK	RT410-0025	1
Length		899.5mm	35.41"
Piston Weight		4.8 kg	10.6 lb
Total Weight (Approx)		21.4 kg	47.18 lb



AIR CONSUMPTION	
Pressure	CFM(m ³ /min)
100psi /6.9bar	70(2.0)
150psi /10.35bar	95(2.7)
200psi /13.8bar	145(4.1)
250psi /17.2bar	200(5.7)
300psi /20.6bar	250(7.0)

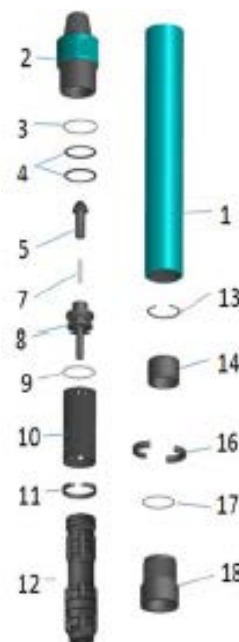
GENERAL SPECIFICATION	
Shank	I.R 3.5
Backhead Therad	2 3/8 A.P.I. 5N PIN
Outside Diamater	78mm
Working Pressure	6.9bar-20.6bar
Stroke	89mm

D		Flusing hole No		Buttons					Part No.	Product Code.
mm	in	Front	Gauge	ConCave	Front	Gauge	Side	Design		
				NoXSize	NoXSiz	NoXSiz	NoXSiz			
I.R 3.5 Shank										
89	3 1/2"	2	-	-	4x11	8x12	-	SP	RT320-0071	N089IR3.5SFF2
105	4 1/8"	2	-	-	6x12	8x14	-	BA	TBA	N105IR3.5BFF2



ROCKY-W4 Hammer

Item	Description	DHD340 Part Number	M40 Part Number	DN40 Part Number	SD4 Part Number	QL40 Part Number	EA
0	HAMMER	RT410-0346	RT410-0356	RT410-0353	RT410-0409	RT410-0368	1
1	WEAR SLEEVE			RT410-0347			1
2	BACK HEAD			RT140-0029			1
3	O RING			S8132341			1
4	DISC SPRING			RT410-0030			1
5	CHECK VALVE			RT410-0010			1
7	COIL SPRING			RT410-0183			1
8	AIR DISTRIBUTOR			RT410-0348			1
9	O RING			S8131441			1
10	CYLINDER			RT410-0349			1
11	CYLINDER RETAIN RING			RT410-0033			1
12	PISTON	RT410-0350	RT410-0358	RT410-0354	RT410-0410	RT410-0369	1
13	PISTON RETAIN RING			RT410-0351			1
14	BEARING	RT410-0352	RT410-0357	RT410-0355	RT410-0415	RT410-0371	1
15	O RING	-	S8132331	-	-	-	1
16	BIT RETAIN RING	RT410-0036	RT410-0193	RT410-0280	RT410-0411	RT410-0370	1
17	ORING			S8131511			1
18	CHUCK	RT410-0037	RT410-0194	RT410-0281	RT410-0412	RT410-0372	
Length		887.5mm	926.5mm	912.5mm	938.3mm	922.4mm	
Piston weight		9.4kg	8.5kg	9.2kg	9.4kg	8.5kg	
Total weight (approx.)		35kg	37kg	36kg	36kg	36kg	



AIR CONSUMPTION	
Pressure	CFM(m ³ /min)
100psi /6.9bar	163.7(4.6)
150psi /10.35bar	245.6(6.9)
200psi /13.8bar	327(9.3)
250psi /17.2bar	408(11.5)
300psi /20.6bar	474.5(13.4)
350psi /24.0bar	569.5(16.1)

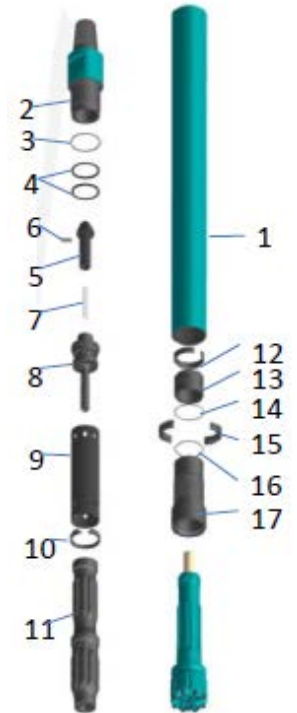
GENERAL SPECIFICATION	
Shank	DHD340, QL40, M40
Backhead Therad	2 3/8 A.P.I. 5N PIN
Outside Diamater	98mm
Working Pressure	10.0bar-27.0bar
Stroke	102mm

D		Flusing hole No		Buttons					Part No.	Product Code.
mm	in	Front	Gauge	ConCave NoXSize	Front NoXSiz	Gauge NoXSiz	Side NoXSiz	Design		
DHD340 Shank										
102	4"	2			8x12	8x14		SP	RT320-0072	N102DHD340SFF2
102	4"	2		3x12	4x12	8x14	-	SP	RT320-0073	N102DHD340SCC2
105	4 1/8"	2	-	-	7x12	8x14	-	SP	RT320-0074	N105DHD340SFF2
115	4 1/2"	2	-	3x12	4x12	8x14	-	SP	RT320-0007	N115DHD340SCC2
115	4 1/2"	2	-	-	8x12	8x14	-	SP	RT320-0077	N115DHD340SFF2
127	5"	2	-	4X12	4X12	8x16	-	SP	RT320-0040	N127DHD340SCC2
M40 Shank										
101	4"	2	-	3x12	4x12	8x14	-	BA	RT320-0010	N102M40BCC2
115	4 1/2"	2	-	4x12	4x12	8x14	-	BA	RT320-0008	N115M40BCC2
120	4 3/4"	2	-	4X12	4x12	8x14	-	BA	RT320-0033	N120M40BCC2
127	5"	2	-	-	9x12	8x16	-	SP	RT320-0083	N127M40SFF2



ROCKY-W5 Hammer

Item	Description	DHD 350 Part Number	QL50 Part Number	QL50 FVL Part Number	DHD350 FVL Part Number	M50 FVL Part Number	SD5 FV Part Number	EA
0	HAMMER	RT410-0038	RT410-0275	RT410-0201	RT410-0283	RT410-0207	RT410-0305	1
1	WEAR SLEEVE	RT410-0039						1
2	BACK HEAD	RT410-0040						1
3	O-RING	S8132401						1
4	DISC SPRING	RT410-0041						2
5	CHECK VALVE	RT410-0042						1
6	PLUG	RT410-0051						1
7	COIL SPRING	RT410-0184						1
8	AIR DISTRIBUTOR	RT410-0043						1
9	CYLINDER	RT410-0044						1
10	CYLINDER RETAIN RING	RT410-0045						1
11	PISTON	RT410-0046	RT410-0276	RT410-0202		RT410-0306		1
12	PISTON RETAIN RING	RT410-0047						1
13	BIT RETAIN RING	RT410-0048	RT410-0204		RT410-0048	RT410-0208	RT410-0307	1
14	O-RING	S8131531						1
15	BEARING	RT410-0049	RT410-0277	RT410-0205	RT410-0288	RT410-0209	RT410-0309	1
16	O-RING	S8131531						1
17	CHUCK	RT410-0050	RT410-0206		RT410-0289	RT410-0210	RT410-0310	1
Length		1,128.6mm	1,132mm		1,128.6mm	1,150mm		
Piston Weight		14.8 kg	15.78 kg	13.7 kg				
Total Weight (Approx)		58.12 kg	59.5 kg	60.5 kg	59.8 kg	61.0 kg		



AIR CONSUMPTION	
Pressure	CFM(m ³ /min)
100psi /6.9bar	239(6.8)
150psi /10.35bar	356.8(10.1)
200psi /13.8bar	478.1(13.5)
250psi /17.2bar	595.9(16.9)
300psi /20.6bar	712.7(20.2)
350psi /24.0bar	831.5(23.5)
400psi /27.5bar	952.7(27)
450psi /31.0bar	1073(30.4)

GENERAL SPECIFICATION	
Shank	DHD350, MISSION50, QL50, SD5
Backhead Therad	3 1/2 A.P.I. 5N PIN
Outside Diamater	117mm
Working Pressure	6.9bar-31.0bar
Stroke	110mm

DHD350 BEARING	RT410-0303 I.D 77.5X54L
	RT410-0304 I.D. 83X77.4L

Note: DHD350 Bearing I.D 77.5mm - RT410-0303

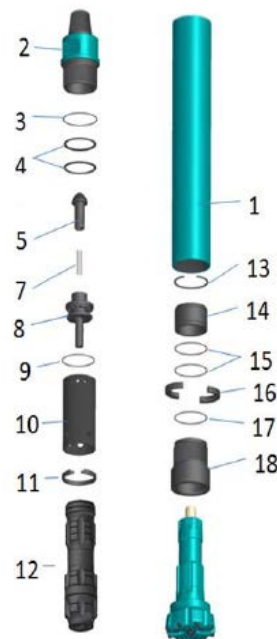


D		Flusing hole No			Buttons				Part No.	Product Code.
mm	in	Front	Gauge	ConCave NoXSize	Front NoXSiz	Gauge NoXSiz	Side NoXSiz	Design		
SD5 Shank										
140	5 1/2"	2	-	-	8x14	8X16	-	SP	RT320-0012	N140SD5SFF2
145	5 3/4"	2	-	-	8X14	8X16	-	SP	RT320-0084	N145SD5SFF2
DHD350 Shank										
127	5"	2	-	4X14	4X14	8X16	-	SP	RT320-0081	N127DHD350SCC2
140	5 1/2"	2	-	4X14	4X14	8X16	-	SP	RT320-0005	N140DHD350SCC2
152	6"	2	-	4x16	4x16	8x18	-	SP	RT320-0134	N152DHD350SCC2
165	6 1/2"	2	-	4x16	4x16	8X19	-	SP	RT320-0135	N165DHD350SCC2
QL50 Shank										
127	5"	2	-	4X14	4X14	8X16	-	SP	RT320-0156	N127QL50SCC2
140	5 1/2"	2	-	-	8X12	8X14	-	SP	RT320-0031	N140QL50SFF2



ROCKY-W6 Hammer

Item	Description	DHD360 Part Number	QL60 FVL Part Number	M 60Part Number	MV 6 Part Number	QL60 Part Number	SD 6 Part Number	EA
0	HAMMER	RT410-0333	RT410-0362	RT410-0339	Rt410-0342	RT410-0344	RT410-0284	1
1	WEAR SLEEVE				RT410-0334			1
2	BACK HEAD				RT140-0335			1
3	O RING				S8132461			1
4	DISC SPRING				RT410-0055			1
5	CHECK VALVE				RT410-0042			1
7	COIL SPRING				RT410-0184			1
8	AIR DISTRIBUTOR		RT410-0348			RT410-0524	RT410-0336	1
9	O RING				S8131511			1
10	CYLINDER				RT410-0337			1
11	CYLINDER RETAIN RING				RT410-0058			1
12	PISTON	RT410-0338		RT410-0340		RT410-0345	RT410-0285	1
13	PISTON RETAIN RING				RT410-0063			1
14	BEARING	RT410-0338		RT410-0340		RT410-0345	RT410-0285	1
15	O RING				RT410-0063			1
16	BIT RETAIN RING	RT410-0061	RT410-00676	RT410-0071	RT410-0075	RT410-0067	RT410-0286	1
17	CHUCK				S8132441			1
18	ORING	RT410-0062	RT410-0068	RT410-0072	RT410-0076	RT410-0068	RT410-0287	1
	Length	1028.6mm	1035.3mm	1012mm	1015mm	1035.3mm	1166.9mm	
	Piston weight	21.5kg		22.7kg		21.5kg	22.4kg	
	Total weight (approx.)	80kg	81.5kg	81.6kg	80kg	80kg	80kg	



AIR CONSUMPTION	
Pressure	CFM(m ³ /min)
100psi /6.9bar	306.5(8.7)
150psi /10.35bar	459.7(13)
200psi /13.8bar	612.9(17.4)
250psi /17.2bar	764(21.6)
300psi /20.6bar	915(25.9)
350psi /24.0bar	1066(30.2)
400psi /27.5bar	1221.5(34.6)
450psi /31.0bar	1376.9(39)

GENERAL SPECIFICATION	
Shank	DHD360, MISSION60, QL60, SD6
Backhead Therad	3 1/2 A.P.I. 5N PIN
Outside Diamater	139mm
Working Pressure	6.9bar-31.0bar
Stroke	102mm

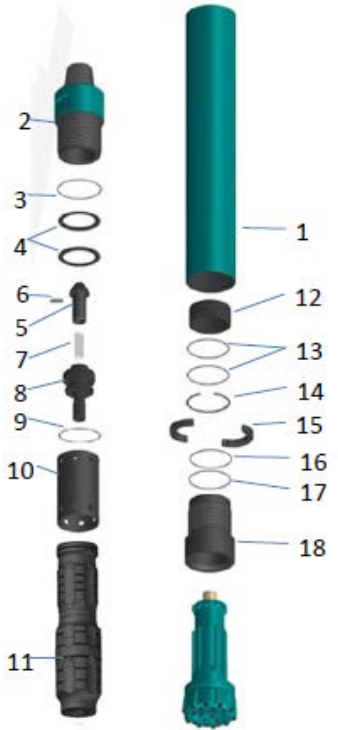


D		Flusing hole No			Buttons				Part No.	Product Code.
mm	in	Front	Gauge	ConCave NoXSize	Front NoXSiz	Gauge NoXSiz	Side NoXSiz	Design		
SD6 Shank										
156	6 1/8"	2	-	-	8X16	8X18	-	SP	RT320-0173	N156SD6SFF2
165	6 1/2"	2	-	4X16	4X16	8X19	-	SP	RT320-0103	N165SD6SCC2
165	6 1/2"	2	-	-	8X16	8X19	-	SP	RT320-0160	N165SD6SFF2
190	7 1/2"	2	-	-	12x16	10x16	-	SP	RT320-0106	N190SD6SFF2
203	8"	2	-	-	14x16	10x19	-	SP	RT320-0172	N203SD6SFF2
DHD360 Shank										
152	6"	2	-	4x16	4x16	8x18	-	SP	RT320-0147	N152DHD360SCC2
165	6 1/2"	2	-	4x16	4x16	8X19	-	SP	RT320-0100	N165DHD360SCC2
177	7"	2	-	4X16	6X16	8X19	-	SP	RT320-0146	H177DHD360SCC2
190	7 1/2"	2	-	4X16	8X16	10X19	-	SP	RT320-0165	N190DHD360SCC2
203	8"	3	-	6X16	8X16	10X19	-	SP	RT320-0152	N203DHD360SCC2
QL60 Shank										
152	6"	2	-	4X16	4X16	8X16	-	SP	RT320-0094	N152QL60SCC2
165	6 1/2"	2	-	4X16	4X16	8X19	-	SP	RT320-0166	N165QL60SCC2
177	7"	2	-	4X16	6X16	8X19	-	SP	RT320-0102	N177QL60SCC2
203	8"	2	-	6X16	8X16	10X19	-	SP	RT320-0161	N203QL60SCC2
M60 Shank										
152	6"	2	-	4x16	4x16	8X18	-	SP	RT320-0088	N152M60SCC2
155	6 1/8"	2	-	4x16	4x16	8X16	-	SP	RT320-0096	N155M60SCC2
155	6 1/8"	2	-	4x18	4x18	8X18	-	SP	RT320-0099	N155M60SCC2
203	8"	2	-	-	14X16	10X19	-	SP	RT320-0119	N203M60SFF2



ROCKY-W8 Hammer

Item	Description	DHD 380 Part Number	QL80 Part Number	SD8 Part Number
0	HAMMER	RT410-0382	RT410-0531	RT410-0526
1	WEAR SLEEVE		RT410-0384	
2	BACK HEAD		RT410-0383	
3	O-RING		S8133611	
4	DISC SPRING		RT410-0083	
5	CHECK VALVE		RT410-0084	
6	PLUG		RT410-0051	
7	COIL SPRING		RT410-0185	
8	AIR DISTRIBUTOR		RT410-0385	
9	O RING		S8131561	
10	CYLINDER		RT410-0386	
11	PISTON	RT410-0387	RT410-0532	RT4100527
12	PISTON RETAIN RING		RT410-0090	
13	BEARING	RT410-0388	RT410-0533	RT410-0528
14	O RING		S8132551	
15	BIT RETAIN RING	RT410-0092	RT410-0534	RT410-0529
16	O-RING		S8132551	
17	O RING	-	-	S8132531
18	CHUCK	RT410-0093	RT410-0535	RT410-0530
Length		1268.5mm	1251.3mm	1239.7mm
Piston Weight		45.2kg	45.2kg	45.2kg
Total Weight (Approx)		187kg	187kg	187kg



AIR CONSUMPTION	
Pressure	CFM(m ³ /min)
100psi /6.9bar	430.7(12.2)
150psi /10.35bar	646(18.3)
200psi /13.8bar	861.4(24.4)
250psi /17.2bar	1073.6(30.4)
300psi /20.6bar	1248.4(35.4)
350psi /24.0bar	1498(42.4)
400psi /27.5bar	1716.5(48.6)
450psi /31.0bar	1935(54.8)

GENERAL SPECIFICATION	
Shank	DHD380, QL80, SD8
Backhead Therad	4 1/2 A.P.I. 5N PIN
Outside Diamater	182mm
Working Pressure	6.9bar-31.0bar
Stroke	106mm

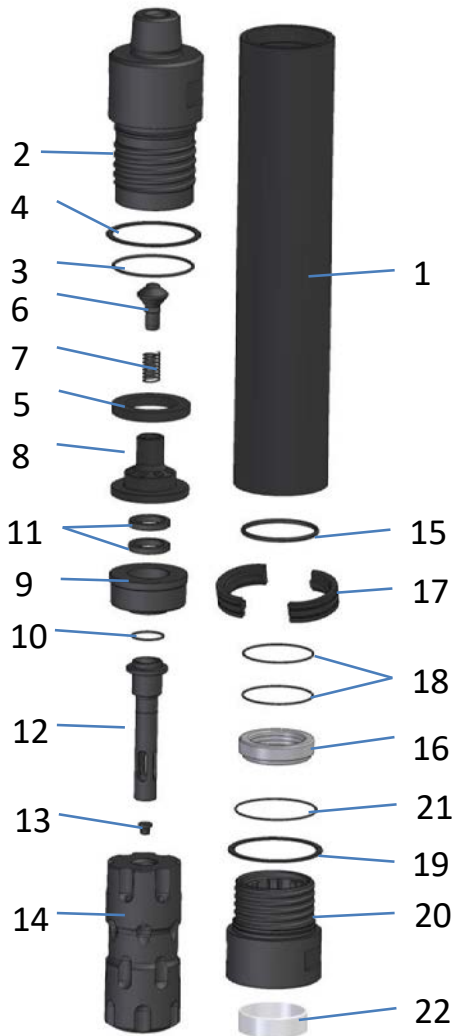


D		Flusing hole No		Buttons				Part No.	Product Code.	
mm	in	Front	Gauge	ConCave	Front	Gauge	Side	Design		
				NoXSize	NoXSiz	NoXSiz	NoXSiz			
SD8 Shank										
193	7 5/8"	2	-	6X16	8X16	10X19	-	SP	RT320-0112	N193SD8SCC2
203	8"	2	-	-	14X16	10X19	-	SP	RT320-0168	N203SD8SFF2
225	8 7/8"	2	-	7X16	12x16	9x19	-	SP	RT320-0035	N225SD8SCC3
250	9 7/8"	2	-	10x16	14x16	12x19	-	SP	RT320-0123	N250SD8SCC2
DHD380 Shank										
193	7 5/8"	2	-	6X16	8X16	10X19	-	SP	RT320-0109	N193DHD380SCC2
197	7 3/4"	2	-	6X16	8X16	10X19	-	SP	RT320-0113	N197DHD380SCC2
200	7 7/8"	2	-	6X16	8X16	10X19	-	SP	RT320-0153	N200DHD380SCC2
203	8"	2	-	6X16	8X16	10X19	-	SP	RT320-0155	N203DHD380SCC2
225	8 7/8"	2	-	6X16	12X16	10X19	-	SP	RT320-0154	N225DHD380SCC2
254	10"	2	-	10x16	14x16	12x19	-	SP	RT320-0124	N254DHD380SCC2
265	10 1/2"	2	-	10x16	14x16	12x19	-	SP	RT320-0128	N265DHD380SCC2
QL80 Shank										
193	7 5/8"	2	-	6X16	8X16	10X19	-	SP	RT320-0111	N193QL80SCC2
197	7 3/4"	2	-	6X16	8X16	10X19	-	SP	RT320-0115	N197QL80SCC2
200	7 7/8"	2	-	6X16	8X16	10X19	-	SP	RT320-0117	N200QL80SCC2
203	8"	2	-	6X16	8X16	10X19	-	SP	RT320-0120	N203QL80SCC2
250	9 7/8"	2	-	10x16	14x16	12x19	-	SP	RT320-0122	N250QL80SCC2
254	10"	2	-	10x16	14x16	12x19	-	SP	RT320-0126	N254QL80SCC2



ROCKY-T 120

No.	Rocky-T 120(272)	IR112 shank Part Number	Q'ty (EA)
0	Hammer	RT416-0076	1
1	Wear sleeve	RT416-0077	1
2	Back head	RT416-0078	1
3	O-RING		1
4	Back head washer	RT416-0079	1
5	Make up ring	RT416-0061	1
6	Check valve	RT416-0062	1
7	Coil spring	RT416-0063	1
8	Diverter	RT416-0064	1
9	Control tube holder	RT416-0065	1
10	O-RING		1
11	Control tube Buffers	RT416-0066	2
12	Control tube	RT416-0067	1
13	Choke	RT416-0068	1
14	Piston	RT416-0080	1
15	Piston retain ring	RT416-0070	2
16	Bearing	RT416-0071	1
17	Bit retain ring	RT416-0072	1
18	O-RING		1
19	Chuck washer	RT416-0081	1
20	Chuck	RT416-0082	1
21	O-RING		1
22	Chuck bearing	RT416-0075	1

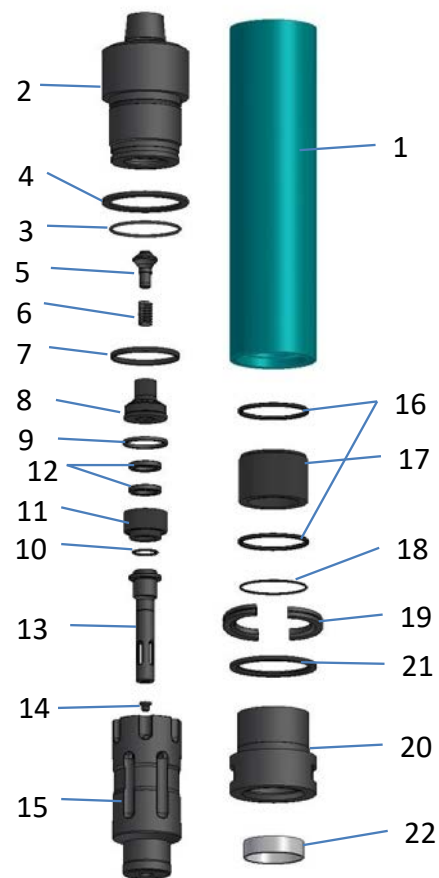


GENERAL SPECIFICATION	
O.D.	272mm
Total Length	1,828mm
Total Weight	628kg
Piston Weight	121kg
Air Consumption	100psi ->429CFM
	150psi ->760CFM
	200psi ->1,050CFM
Back Head Thread	6 5/8 A.P.I. 4N BOX
Shank	IR112



ROCKY-T 140

No.	Rocky-T 140	N125 shank Part Number	Q'ty (EA)
0	HAMMER	RT416-0155	1
1	Wear sleeve	RT416-0122	1
2	Back head	RT416-0123	1
3	O-RING		1
4	Back head washer	RT416-0124	1
5	Check valve	RT416-0062	1
6	Coil spring	RT416-0063	1
7	Back haed wearing	RT416-0125	1
8	Diverter	RT416-0126	1
9	Stop ring	RT416-0130	1
10	O-ring		1
11	Control tube holder	RT416-0129	1
12	Control tube Buffers	RT416-0066	2
13	Control tube	RT416-0067	1
14	Choke	RT416-0068	1
15	Piston	RT416-0131	1
16	Piston retain ring	RT416-0132	2
17	Bearing	RT416-0143	1
18	O-RING		1
19	Bit retain ring	RT416-0144	1
20	Chuck	RT416-0145	1
21	Chuck washer	RT416-0124	1
22	Chuck bearing	RT416-0146	1

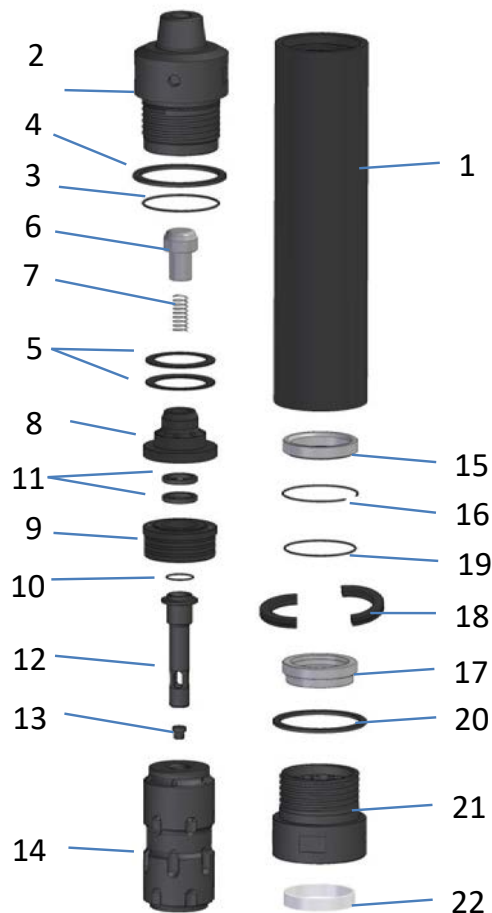


GENERAL SPECIFICATION	
O.D.	320mm
Total Length	1,738mm
Total Weight	755kg
Piston Weight	166.8kg
Air Consumption	100psi ->600CFM
	150psi ->1,065CFM
	200psi ->1,500CFM
Back Head Thread	6 5/8 A.P.I. 4N BOX
Shank	N125



ROCKY-T 150H

No.	Rocky-T 150H	SD15 shank Part Number	Q'ty (EA)
0	Hammer	RT416-0039	1
1	Wear sleeve	RT416-0040	1
2	Back head	RT416-0041	1
3	O-RING		1
4	Back head washer	RT416-0042	1
5	Disc spring	RT416-0043	2
6	Check valve	RT416-0006	1
7	Coil spring	RT416-0007	1
8	Diverter	RT416-0044	1
9	Control tube holder	RT416-0045	1
10	O-RING		1
11	Control tube Buffers	RT416-0046	2
12	Control tube	RT416-0047	1
13	Choke	RT416-0048	1
14	Piston	RT416-0049	1
15	Bushing	RT416-0050	1
16	Piston retain ring	RT416-0051	1
17	Bearing	RT416-0052	1
18	Bit retain ring	RT416-0053	1
19	O-RING		1
20	Chuck washer	RT416-0054	1
21	Chuck	RT416-0055	1
22	Chuck bearing	RT416-0056	1

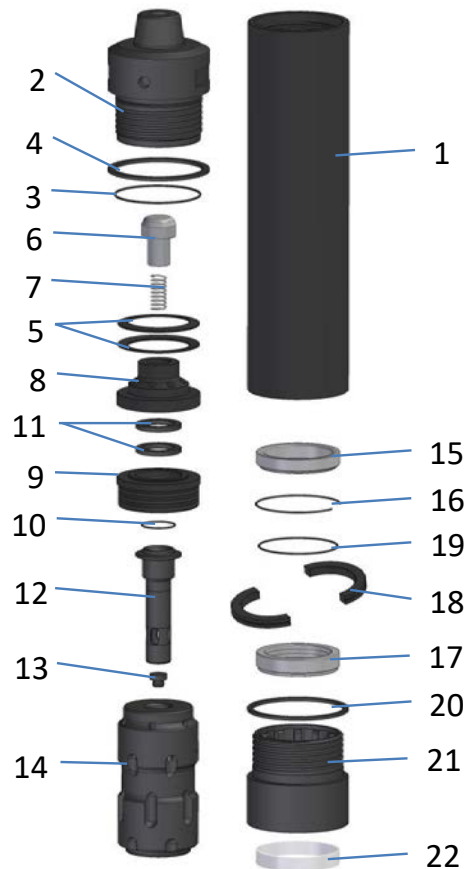


GENERAL SPECIFICATION	
O.D.	376mm
Total Length	1,933mm
Total Weight	1,271kg
Piston Weight	240kg
Air Consumption	100psi ->900CFM
	150psi ->1,650CFM
	200psi ->2,540CFM
Back Head Thread	8 5/8 A.P.I. 4N BOX
Shank	SD15



ROCKY-T 180

No.	Rocky-T 180	SD18 shank Part Number	Q'ty (EA)
0	Hammer	RT416-0021	
1	Wear sleeve	RT416-0022	1
2	Back head	RT416-0023	1
3	O-RING		
4	Back head washer	RT416-0024	1
5	Disc spring	RT416-0025	2
6	Check valve	RT416-0006	1
7	Coil spring	RT416-0007	1
8	Diverter	RT416-0026	1
9	Control tube holder	RT416-0027	1
10	O-RING		
11	Control tube Buffers	RT416-0028	2
12	Control tube	RT416-0029	1
13	Choke	RT416-0030	1
14	Piston	RT416-0031	1
15	Bushing	RT416-0032	1
16	Piston retain ring	RT416-0033	1
17	Bearing	RT416-0034	1
18	Bit retain ring	RT416-0035	1
19	O-RING		
20	Chuck washer	RT416-0036	1
21	Chuck	RT416-0037	1
22	Chuck bearing	RT416-0038	1



GENERAL SPECIFICATION	
O.D.	402mm
Total Length	2,060mm
Total Weight	1,455kg
Piston Weight	309kg
Air Consumption	100psi ->1,090CFM



ÉQUIPEMENT DE FORAGE QUÉBEC
203-5245 GUILLAUME COUTURE
LÉVIS (Qc) G6V 4Z4
418-903-4801

