



# EFG

ÉQUIPEMENT DE FORAGE DU QUÉBEC

## PARTS LIST



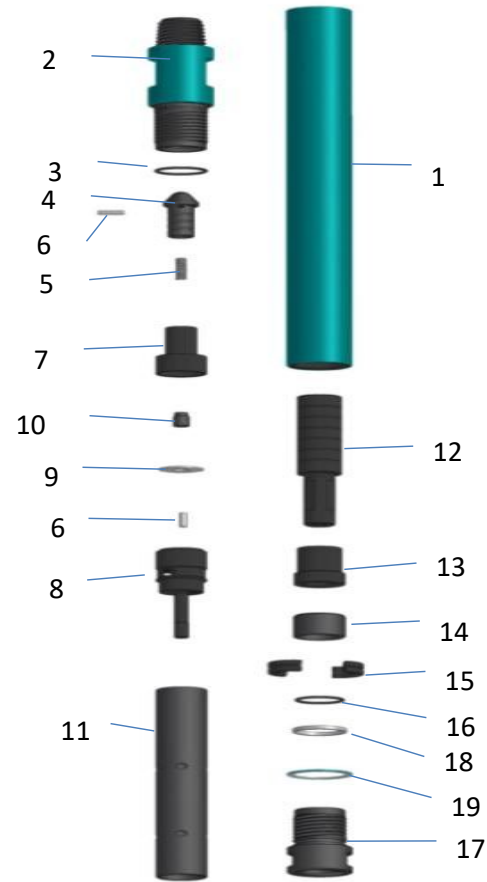


ROCK TOOLS HAMMER ROCKY-W 2 .....	3
ROCK TOOLS HAMMER ROCKY-W 3 .....	4
ROCK TOOLS HAMMER ROCKY-W 4 .....	6
ROCK TOOLS HAMMER ROCKY-W 5 .....	8
ROCK TOOLS HAMMER ROCKY-W 6 .....	10
ROCK TOOLS HAMMER ROCKY-W 8 .....	13
DURA WING 125 .....	15
DURA WING 129 .....	15
DURA WING 134 .....	15
DURA WING 140 .....	15
DURA WING 147 .....	15
DURA WING 152 .....	15
DURA WING 165 .....	15
DURA WING 180 .....	15
DURA WING 190 .....	15
DURA WING 211 .....	15
DURA WING 230 .....	15
DURA WING 240 .....	15
DURA WING 252 .....	15
DURA WING 280 .....	15
DURA WING 315 .....	15
DURA WING 365 .....	15
DURA WING 410 .....	15
DURA WING 460 .....	15
DURA WING 560 .....	15
DURA WING GENERAL GUIDE .....	16
Parts name of Dura Wing bit .....	16
General life-time of Pilot Bit, Guide Device, Wing Bit .....	17
Life-time feedback from customer .....	18
Product order guideline (Example of hard rock in Hong Kong) .....	19
Comments and cautions .....	20



**ROCK TOOLS HAMMER ROCKY-W 2  
PART LIST AND TECHNICAL DATA**

Item	Description	BULROC2 Part Number	BULROC2 BOX Part Number	EA
0	HAMMER	RT410-0393	RT410-0323	1
1	WEAR SLEEVE	RT410-0394		1
2	BACK HEAD	RT410-0395	RT410-0324	1
3	O-RING	S8130311		1
4	CHECK VALVE	RT410-0005		1
5	COIL SPRING	RT410-0182		1
6	PLUG	RT410-0026		2
7	AIR DISTRIBUTOR	RT410-0396		1
8	GUIDE	RT410-0397		1
9	RETAINER VALVE	RT410-0398		1
10	CENTER FLANGE	RT410-0399		1
11	CYLINDER	RT410-0400		1
12	PISTON	RT410-0401		1
13	BEARING	RT410-0402		1
14	SPACER	RT410-0403		1
15	BIT RETAIN RING	RT410-0404		1
16	O-RING	S8130301		1
17	CHUCK	RT410-0405		1
18	SEAL	RT410-0406		1
19	WEAR RING	RT410-0407		1
<b>Length</b>		778mm	30.63"	
<b>Piston Weight</b>		1.8kg	3.97lb	
<b>Total Weight (Approx)</b>		16.7kg	36.82lb	



AIR CONSUMPTION	
Pressure	CFM(m <sup>3</sup> /min)
100psi /6.9bar	25(0.7)
150psi /10.35bar	48(1.3)
200psi /13.8bar	75(2.1)
250psi /17.2bar	105(2.9)

GENERAL SPECIFICATION	
Shank	BULROC2
Backhead Therad	1-1/2" T.P.F PIN , RD40 , RD50
Outside Diamater	63mm
Working Pressure	6.9bar-17.2bar
Stroke	102mm

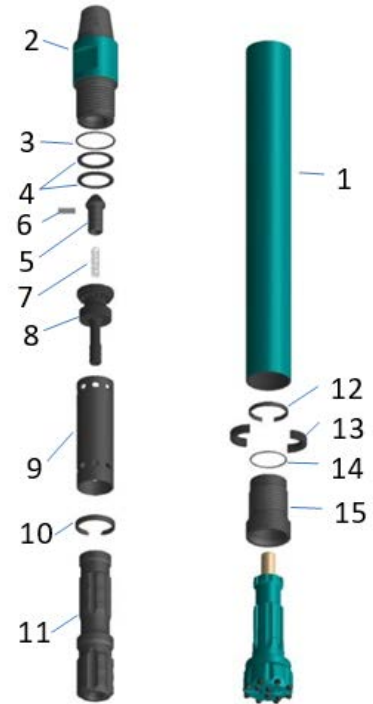
D		Flusing hole No		Buttons					Part No.	Product Code.
mm	in	Front	Gauge	ConCave NoXSize	Front NoXSize	Gauge NoXSize	Side NoXSize	Design		
<b>BULROC 2 Shank</b>										
76	3"	2	-	-	4x11	6x11	-	SP	RT320-0070	N076BULROC2SFF2
89	3 1/2"	2	-	-	4x11	8x12	-	SP	TBA	N089BULROC2SFF2



# 4

## ROCK TOOLS HAMMER ROCKY-W 3 PART LIST AND TECHNICAL DATA

Item	Description	I.R 3.5 'Part Number		EA
0	HAMMER	RT410-0014		1
1	WEAR SLEEVE	RT410-0015		1
2	BACK HEAD	RT410-0016		1
3	O-RING	S8132291		1
4	DISC SPRING	RT410-0017		2
5	CHECK VALVE	RT410-0018		1
6	PLUG	RT410-0026		1
7	COIL SPRING	RT410-0183		1
8	AIR DISTRIBUTOR	RT410-0019		1
9	CYLINDER	RT410-0020		1
10	CYLINDER RETAIN RING	RT410-0021		1
11	PISTON	RT410-0022		1
12	PISTON RETAIN RING	RT410-0023		1
13	BIT RETAIN RING	RT410-0024		1
14	O-RING	S8131401		1
15	CHUCK	RT410-0025		1
<b>Length</b>		899.5mm	35.41"	
<b>Piston Weight</b>		4.8 kg	10.6 lb	
<b>Total Weight (Approx)</b>		<b>21.4 kg</b>	<b>47.18 lb</b>	





# 5

GENERAL SPECIFICATION	
Shank	I.R 3.5
Backhead Therad	2 3/8 A.P.I. 5N PIN
Outside Diamater	78mm
Working Pressure	6.9bar-20.6bar
Stroke	89mm

AIR CONSUMPTION	
Pressure	CFM(m <sup>3</sup> /min)
100psi /6.9bar	70(2.0)
150psi /10.35bar	95(2.7)
200psi /13.8bar	145(4.1)
250psi /17.2bar	200(5.7)
300psi /20.6bar	250(7.0)

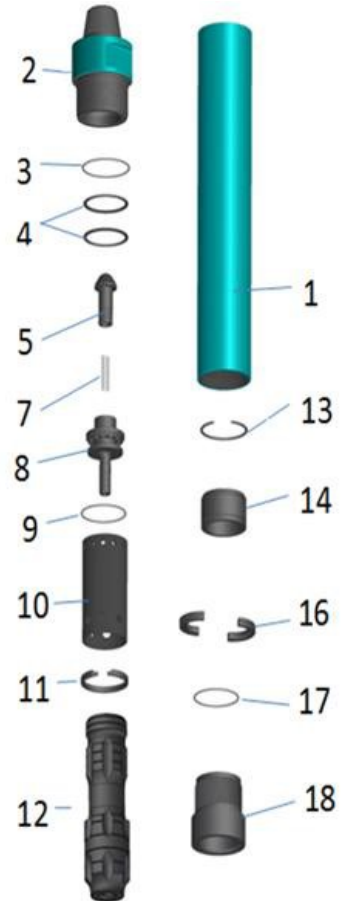
D		Flusing hole No		Buttons					Part No.	Product Code.
mm	in	Front	Gauge	ConCave	Front	Gauge	Side	Design		
				NoXSize	NoXSize	NoXSize	NoXSize			
<b>BULROC 2 Shank</b>										
89	3 1/2"	2	-	-	4x11	8x12	-	SP	RT320-0071	N0891R3.53FF2
105	4 1/8"	2	-	-	6x12	8x14	-	BA	TBA	N1051R3.5BFF2



# 6

## ROCK TOOLS HAMMER ROCKY-W 4 PART LIST AND TECHNICAL DATA

Item	Description	DHD340 Part Number	M40 Part Number	DN40 Part Number	SD4 Part Number	QL40 Part Number	EA
0	HAMMER	RT410-0346	RT410-0356	RT410-0353	RT410-0409	RT410-0368	1
1	WEAR SLEEVE	RT410-0347					1
2	BACK HEAD	RT410-0029					1
3	O-RING	S8132341					1
4	DISC SPRING	RT410-0030					2
5	CHECK VALVE	RT410-0018					1
7	COIL SPRING	RT410-0183					1
8	AIR DISTRIBUTOR	RT410-0348					1
9	O-RING	S8131441					1
10	CYLINDER	RT410-0349					1
11	CYLINDER RETAIN RING	RT410-0033					1
12	PISTON	RT410-0350	RT410-0358	RT410-0354	RT410-0410	RT410-0369	1
13	PISTON RETAIN RING	RT410-0351					1
14	BEARING	RT410-0352	RT410-0357	RT410-0355	RT410-0415	RT410-0371	1
15	O-RING	S8132331					1
16	BIT RETAIN RING	RT410-0036	RT410-0193	RT410-0280	RT410-0411	RT410-0370	1
17	O-RING	S8131511					1
18	CHUCK	RT410-0037	RT410-0194	RT410-0281	RT410-0412	RT410-0372	1
Length		887.5mm	926.5mm	912.5mm	938.3mm	922.4mm	
Piston Weight		9.4kg	8.5kg	9.2kg	9.4kg	8.5kg	
Total Weight (Approx)		35kg	37kg	36kg	36kg	36kg	



AIR CONSUMPTION	
Pressure	CFM(m <sup>3</sup> /min)
100psi /6.9bar	163.7(4.6)
150psi /10.35bar	245.6(6.9)
200psi /13.8bar	327(9.3)
250psi /17.2bar	408(11.5)
300psi /20.6bar	474.5(13.4)
350psi /24.0bar	569.5(16.1)

GENERAL SPECIFICATION	
Shank	DHD340, QL40, M40
Backhead Therad	2 3/8 A.P.I. 5N PIN
Outside Diamater	98mm
Working Pressure	10.0bar-27.0bar
Stroke	102mm



7

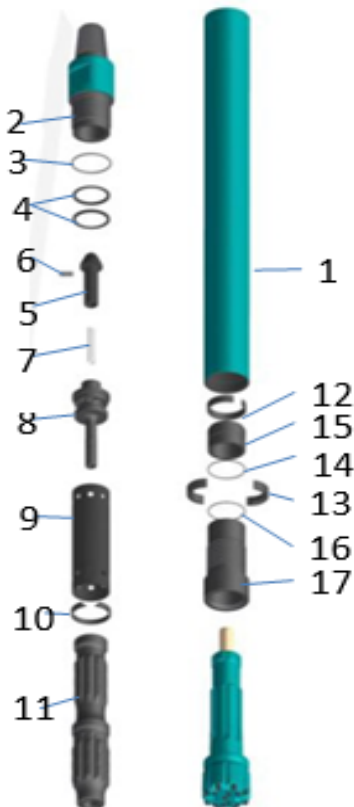
## BIT

D		Flusing hole No		Buttons				Part No.		Product Code.
mm	in	Front	Gauge	ConCave	Front	Gauge	Side	Design		
				NoXSize	NoXSize	NoXSize	NoXSize			
<b>DHD340 Shank</b>										
102	4"	2			8x12	8x14		SP	RT320-0072	N102DHD340SFF2
102	4"	2		3x12	4x12	8x14	-	SP	RT320-0073	N102DHD340SCC2
105	4 1/8"	2	-	-	7x12	8x14	-	SP	RT320-0074	N105DHD340SFF2
115	4 1/2"	2	-	3x12	4x12	8x14	-	SP	RT320-0007	N115DHD340SCC2
115	4 1/2"	2	-	-	8x12	8x14	-	SP	RT320-0077	N115DHD340SFF2
127	5"	2	-	4X12	4X12	8x16	-	SP	RT320-0040	N127DHD340SCC2
<b>M40 Shank</b>										
101	4"	2	-	3x12	4x12	8x14	-	BA	RT320-0010	N102M40BCC2
115	4 1/2"	2	-	4x12	4x12	8x14	-	BA	RT320-0008	N115M40BCC2
120	4 3/4"	2	-	4X12	4x12	8x14	-	BA	RT320-0033	N120M40BCC2
127	5"	2	-	-	9x12	8x16	-	SP	RT320-0083	N127M40SFF2



**ROCK TOOLS HAMMER ROCKY-W 5 PART LIST AND TECHNICAL DATA**

Item	Description	DHD 350 Part Number	QL50 Part Number	QL50 FVL Part Number	DHD350 FVL Part Number	M50 FVL Part Number	SD5 FV Part Number	EA
0	HAMMER	RT410-0038	RT410-0275	RT410-0201	RT410-0283	RT410-0207	RT410-0305	1
1	WEAR SLEEVE				RT410-0039			1
2	BACK HEAD				RT410-0040			1
3	O-RING				S8132401			1
4	DISC SPRING				RT410-0041			2
5	CHECK VALVE				RT410-0042			1
6	PLUG				RT410-0051			1
7	COIL SPRING				RT410-0184			1
8	AIR DISTRIBUTOR				RT410-0043			1
9	CYLINDER				RT410-0044			1
10	CYLINDER RETAIN RING				RT410-0045			1
11	PISTON	RT410-0046	RT410-0276		RT410-0202		RT410-0306	1
12	PISTON RETAIN RING				RT410-0047			1
13	BIT RETAIN RING	RT410-0048		RT410-0204	RT410-0048	RT410-0208	RT410-0307	1
14	O-RING				S8131531			1
15	BEARING	RT410-0049	RT410-0277	RT410-0205	RT410-0288	RT410-0209	RT410-0309	1
16	O-RING				S8131531			1
17	CHUCK	RT410-0050		RT410-0206	RT410-0289	RT410-0210	RT410-0310	1
<b>Length</b>		1,128.6m m	1,132mm		1,128.6m m	1,150mm		
<b>Piston Weight</b>		14.8 kg	15.78 kg	13.7 kg				
<b>Total Weight (Approx)</b>		<b>58.12 kg</b>	<b>59.5 kg</b>	<b>60.5 kg</b>	<b>59.8 kg</b>	<b>61.0 kg</b>		



AIR CONSUMPTION	
Pressure	CFM(m <sup>3</sup> /min)
100psi /6.9bar	239(6.8)
150psi /10.35bar	356.8(10.1)
200psi /13.8bar	478.1(13.5)
250psi /17.2bar	595.9(16.9)
300psi /20.6bar	712.7(20.2)
350psi /24.0bar	831.5(23.5)
400psi /27.5bar	952.7(27)
450psi /31.0bar	1073(30.4)

<b>DHD350 BEARING</b>	RT410-0303 I.D. 77.5X54L
	RT410-0304 I.D. 83X77.4L

GENERAL SPECIFICATION	
Shank	DHD350, MISSION50, QL50, SD5
Backhead Therad	3 1/2 A.P.I. 5N PIN
Outside Diamater	117mm
Working Pressure	6.9bar-31.0bar
Stroke	110mm





# 9

NOTE: DHD350 Bearing I.D 77.5mm - RT410-0303

## BIT

D		Flusing hole No		Buttons					Part No.	Product Code.
mm	in	Front	Gauge	ConCave	Front	Gauge	Side	Design		
				NoXSize	NoXSiz	NoXSiz	NoXSiz			
<b>SD5 Shank</b>										
140	5 1/2"	2	-	-	8x14	8X16	-	SP	RT320-0012	N140SD5SFF2
145	5 3/4"	2	-	-	8X14	8X16	-	SP	RT320-0084	N145SD5SFF2
<b>DHD350 Shank</b>										
127	5"	2	-	4X14	4X14	8X16	-	SP	RT320-0081	N127DHD350SCC2
140	5 1/2"	2	-	4X14	4X14	8X16	-	SP	RT320-0005	N140DHD350SCC2
152	6"	2	-	4x16	4x16	8x18	-	SP	RT320-0134	N152DHD350SCC2
165	6 1/2"	2	-	4x16	4x16	8X19	-	SP	RT320-0135	N165DHD350SCC2
<b>QL50 Shank</b>										
127	5"	2	-	4X14	4X14	8X16	-	SP	RT320-0156	N127QL50SCC2
140	5 1/2"	2	-	-	8X12	8X14	-	SP	RT320-0031	N140QL50SFF2



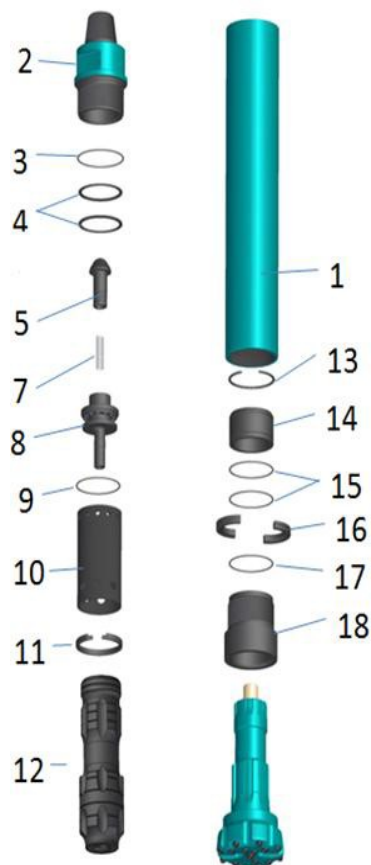
# 10

## ROCK TOOLS HAMMER ROCKY-W 6 PART LIST AND TECHNICAL DATA

Item	Description	DHD 360 Part Number	QL 60FVL Part Number	M 60 Part Number	MV 6 Part Number	QL 60 Part Number	SD 6 Part Number	EA
0	HAMMER	RT410-0333	RT410-0362	RT410-0339	RT410-0342	RT410-0344	RT410-0284	1
1	WEAR SLEEVE	RT410-0334						1
2	BACK HEAD	RT410-0335						1
3	O-RING	S8132461						1
4	DISC SPRING	RT410-0055						2
5	CHECK VALVE	RT410-0042						1
7	COIL SPRING	RT410-0184						1
8	AIR DISTRIBUTOR	RT410-0336			RT410-0524	RT410-0336		1
9	O-RING	S8131511						1
10	CYLINDER	RT410-0337						1
11	CYLINDER RETAIN RING	RT410-0058						1
12	PISTON	RT410-0338	RT410-0340			RT410-0345	RT410-0285	1
13	PISTON RETAIN RING	RT410-0063						1
14	BEARING	RT410-0060	RT410-0066	RT410-0341	RT410-0343	RT410-0079		1
15	O-RING	S8132441						1
16	BIT RETAIN RING	RT410-0061	RT410-0067	RT410-0071	RT410-0075	RT410-0067	RT410-0286	1
17	O-RING	S8132441						1
18	CHUCK	RT410-0062	RT410-0068	RT410-0072	RT410-0076	RT410-0068	RT410-0287	1
	<b>Length</b>	1028.6mm	1035.3mm	1012mm	1015mm	1035.3mm	1,166.9mm	
	<b>Piston Weight</b>	21.5kg	22.7kg			21.5kg	22.4kg	
	<b>Total Weight (Approx)</b>	<b>80kg</b>	<b>81.5kg</b>	<b>81.6kg</b>	<b>80kg</b>	<b>80kg</b>	<b>80kg</b>	



# 11



GENERAL SPECIFICATION	
Shank	DHD360, MISSION60, QL60, SD6
Backhead Therad	3 1/2 A.P.I. 5N PIN
Outside Diamater	139mm
Working Pressure	6.9bar-31.0bar
Stroke	102mm

AIR CONSUMPTION	
Pressure	CFM(m <sup>3</sup> /min)
100psi /6.9bar	306.5(8.7)
150psi /10.35bar	459.7(13)
200psi /13.8bar	612.9(17.4)
250psi /17.2bar	764(21.6)
300psi /20.6bar	915(25.9)
350psi /24.0bar	1066(30.2)
400psi /27.5bar	1221.5(34.6)
450psi /31.0bar	1376.9(39)



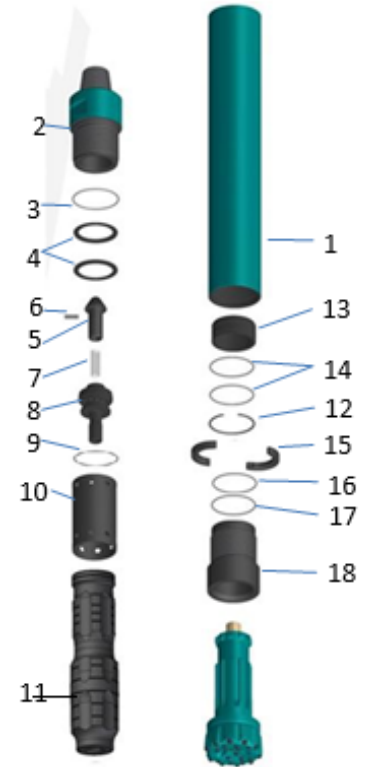
## BIT

D		Flusing hole No		Buttons					Part No.	Product Code.
mm	in	Front	Gauge	ConCave	Front	Gauge	Side			
				NoXSize	NoXSiz	NoXSiz	NoXSiz	Design		
<b>SD6 Shank</b>										
156	6 1/8"	2	-	-	8X16	8X18	-	SP	RT320-0173	N156SD6SFF2
165	6 1/2"	2	-	4X16	4X16	8X19	-	SP	RT320-0103	N165SD6SCC2
165	6 1/2"	2	-	-	8X16	8X19	-	SP	RT320-0160	N165SD6SFF2
190	7 1/2"	2	-	-	12x16	10x16	-	SP	RT320-0106	N190SD6SFF2
203	8"	2	-	-	14x16	10x19	-	SP	RT320-0172	N203SD6SFF2
<b>DHD360 Shank</b>										
152	6"	2	-	4x16	4x16	8x18	-	SP	RT320-0147	N152DHD360SCC2
165	6 1/2"	2	-	4x16	4x16	8X19	-	SP	RT320-0100	N165DHD360SCC2
177	7"	2	-	4X16	6X16	8X19	-	SP	RT320-0146	H177DHD360SCC2
190	7 1/2"	2	-	4X16	8X16	10X19	-	SP	RT320-0165	N190DHD360SCC2
203	8"	3	-	6X16	8X16	10X19	-	SP	RT320-0152	N203DHD360SCC2
<b>QL60 Shank</b>										
152	6"	2	-	4X16	4X16	8X16	-	SP	RT320-0094	N152QL60SCC2
165	6 1/2"	2	-	4X16	4X16	8X19	-	SP	RT320-0166	N165QL60SCC2
177	7"	2	-	4X16	6X16	8X19	-	SP	RT320-0102	N177QL60SCC2
203	8"	2	-	6X16	8X16	10X19	-	SP	RT320-0161	N203QL60SCC2
<b>M60 Shank</b>										
152	6"	2	-	4x16	4x16	8X18	-	SP	RT320-0088	N152M60SCC2
155	6 1/8"	2	-	4x16	4x16	8X16	-	SP	RT320-0096	N155M60SCC2
155	6 1/8"	2	-	4x18	4x18	8X18	-	SP	RT320-0099	N155M60SCC2
203	8"	2	-	-	14X16	10X19	-	SP	RT320-0119	N203M60SFF2



## ROCK TOOLS HAMMER ROCKY-W 8 PART LIST AND TECHNICAL DATA

Item	Description	DHD 380 Part Number	QL 80 Part Number	SD 8 Part Number
0	HAMMER	RT410-0382	RT410-0531	RT410-0526
1	WEAR SLEEVE		RT410-0384	
2	BACK HEAD		RT410-0383	
3	O-RING		S8133611	
4	DISC SPRING		RT410-0083	
5	CHECK VALVE		RT410-0084	
6	PLUG		RT410-0051	
7	COIL SPRING		RT410-0185	
8	AIR DISTRIBUTOR		RT410-0385	
9	O-RING		S8131561	
10	CYLINDER		RT410-0386	
11	PISTON	RT410-0387	RT410-0532	RT410-0527
12	PISTON RETAIN RING		RT410-0090	
13	BEARING	RT410-0388	RT410-0533	RT410-0528
14	O-RING		S8132551	
15	BIT RETAIN RING	RT410-0092	RT410-0534	RT410-0529
16	O-RING		S8132551	
17	O-RING			S8132531
18	CHUCK	RT410-0093	RT410-0535	RT410-0530
<b>Length</b>		1268.5mm	1251.3mm	1239.7mm
<b>Piston Weight</b>		45.2kg	45.2kg	45.2kg
<b>Total Weight (Approx)</b>		<b>187kg</b>	<b>187kg</b>	<b>187kg</b>



AIR CONSUMPTION	
Pressure	CFM(m <sup>3</sup> /min)
100psi /6.9bar	430.7(12.2)
150psi /10.35bar	646(18.3)
200psi /13.8bar	861.4(24.4)
250psi /17.2bar	1073.6(30.4)
300psi /20.6bar	1248.4(35.4)
350psi /24.0bar	1498(42.4)
400psi /27.5bar	1716.5(48.6)
450psi /31.0bar	1935(54.8)

GENERAL SPECIFICATION	
Shank	DHD380, QL80, SD8
Backhead Therad	4 1/2 A.P.I. 5N PIN
Outside Diamater	182mm
Working Pressure	6.9bar-31.0bar
Stroke	106mm



D		Flusing hole No		Buttons					Part No.	Product Code.
mm	in	Front	Gaug e	ConCave	Front	Gauge	Side	Design		
				NoXSize	NoXSiz	NoXSiz	NoXSiz			
<b>SD8 Shank</b>										
193	7 5/8"	2	-	6X16	8X16	10X1 9	-	SP	RT320-0112	N193SD8SCC2
203	8"	2	-	-	14X16	10X1 9	-	SP	RT320-0168	N203SD8SFF2
225	8 7/8"	2	-	7X16	12x16	9x19	-	SP	RT320-0035	N225SD8SCC3
250	9 7/8"	2	-	10x16	14x16	12x1 9	-	SP	RT320-0123	N250SD8SCC2
<b>DHD380 Shank</b>										
193	7 5/8"	2	-	6X16	8X16	10X1 9	-	SP	RT320-0109	N193DHD380SCC2
197	7 3/4"	2	-	6X16	8X16	10X1 9	-	SP	RT320-0113	N197DHD380SCC2
200	7 7/8"	2	-	6X16	8X16	10X1 9	-	SP	RT320-0153	N200DHD380SCC2
203	8"	2	-	6X16	8X16	10X1 9	-	SP	RT320-0155	N203DHD380SCC2
225	8 7/8"	2	-	6X16	12X16	10X1 9	-	SP	RT320-0154	N225DHD380SC C2
254	10"	2	-	10x16	14x16	12x1 9	-	SP	RT320-0124	N254DHD380SCC2
265	10 1/2"	2	-	10x16	14x16	12x1 9	-	SP	RT320-0128	N265DHD380SC C2
<b>QL80 Shank</b>										
193	7 5/8"	2	-	6X16	8X16	10X1 9	-	SP	RT320-0111	N193QL80SCC2
197	7 3/4"	2	-	6X16	8X16	10X1 9	-	SP	RT320-0115	N197QL80SCC2
200	7 7/8"	2	-	6X16	8X16	10X1 9	-	SP	RT320-0117	N200QL80SCC2
203	8"	2	-	6X16	8X16	10X1 9	-	SP	RT320-0120	N203QL80SCC2
250	9 7/8"	2	-	10x16	14x16	12x1 9	-	SP	RT320-0122	N250QL80SCC2
254	10"	2	-	10x16	14x16	12x1 9	-	SP	RT320-0126	N254QL80SCC2



Casing OD (inch )	MODEL NAME
4 1/2"	DURA WING 90
5 1/4"	DURA WING 110
5 1/2"	DURA WING 115
6"	DURA WING 125
6"	DURA WING 129
6 5/8"	DURA WING 134
6 1/2"	DURA WING 140
7"	DURA WING 147
7"	DURA WING 152
7 3/4"	DURA WING 165
8 3/4"	DURA WING 180
8 3/4"	DURA WING 190
9 5/8"	DURA WING 211
10 3/4"	DURA WING 230
10 3/4"	DURA WING 240
11 3/4"	DURA WING 252
12 3/4"	DURA WING 280
14"	DURA WING 315
16"	DURA WING 365
18"	DURA WING 410
20"	DURA WING 460
24"	DURA WING 560

NOTE:

1 Based Terms: T/T in advance before shipment. EXWorks Everdigm Factory in Korea 2 CIF term (by ocean) can be done on orders above USD 40,000. -

3 Validity: Within one month from date of this price list.



## DURA WING GENERAL GUIDE

Parts name of Dura Wing bit



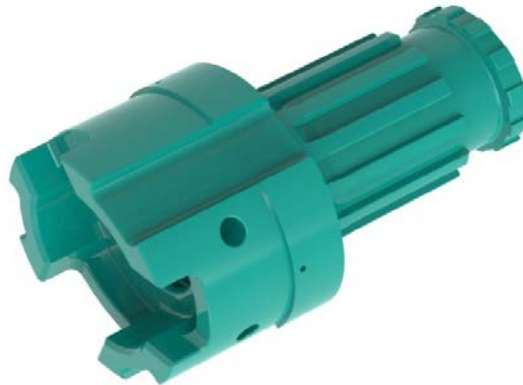




General life-time of Pilot Bit, Guide Device, Wing Bit



[Wing Bit]



[Guide Device]



[Pilot Bit]

Part	Life Time (m)
WING BIT	200~400
PILOT BIT	350~700
GUIDE DEVICE	800~1200

- ✓ It is recommended to replace the locking pin set when replacing the wing bit.  
(Applied from EDW365 or more.)
- ✓ This life time depends on rock condition, operator's skill, machine settings.
- ✓ Wing Bit life time is very subjective to soil condition.



Life-time feedback from customer

Products	Part	Life Time (m, max)	Ground Condition	Job Site	Hammer
EDW365	WING BIT	300~400	Soft Rock	Canada	12"
	PILOT BIT	600~700			
EDW560	WING BIT	300~350	Soft & Medium Rock	HongKong	18"
	PILOT BIT	500~700			
EDW560	WING BIT	200~350	Medium Rock	HongKong	24"
	PILOT BIT	500~600			
	GUIDE DEVICE	900~1200			
EDW761	WING BIT	200~300	Hard Rock	HongKong	28"
	PILOT BIT	400~600			
	GUIDE DEVICE	1000~1200			

- ✓ It is recommended to replace the locking pin set when replacing the wing bit.  
(Applied from EDW365 or more.)
- ✓ This life time depends on rock condition, operator's skill, machine settings.
- ✓ Wing Bit life time is very subjective to soil condition.



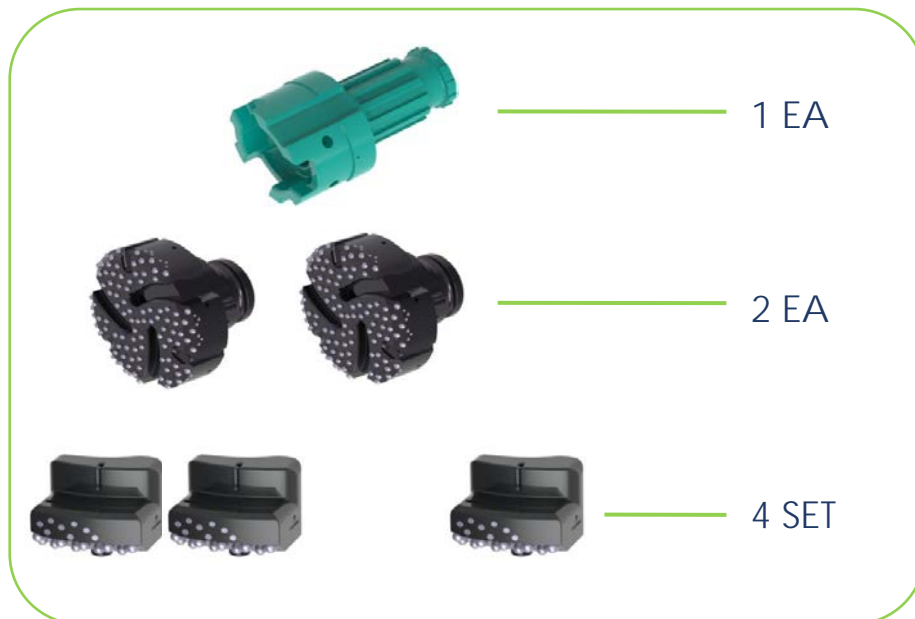
# 19

## Product order guideline (Example of hard rock in Hong Kong)

Example: If the drilling depth per one hole is 25M, and you have to drill 45 holes in total.

\* Total drilling depth: 25(M) \* 45(holes) = 1,125M

We can recommend customers below quantity.

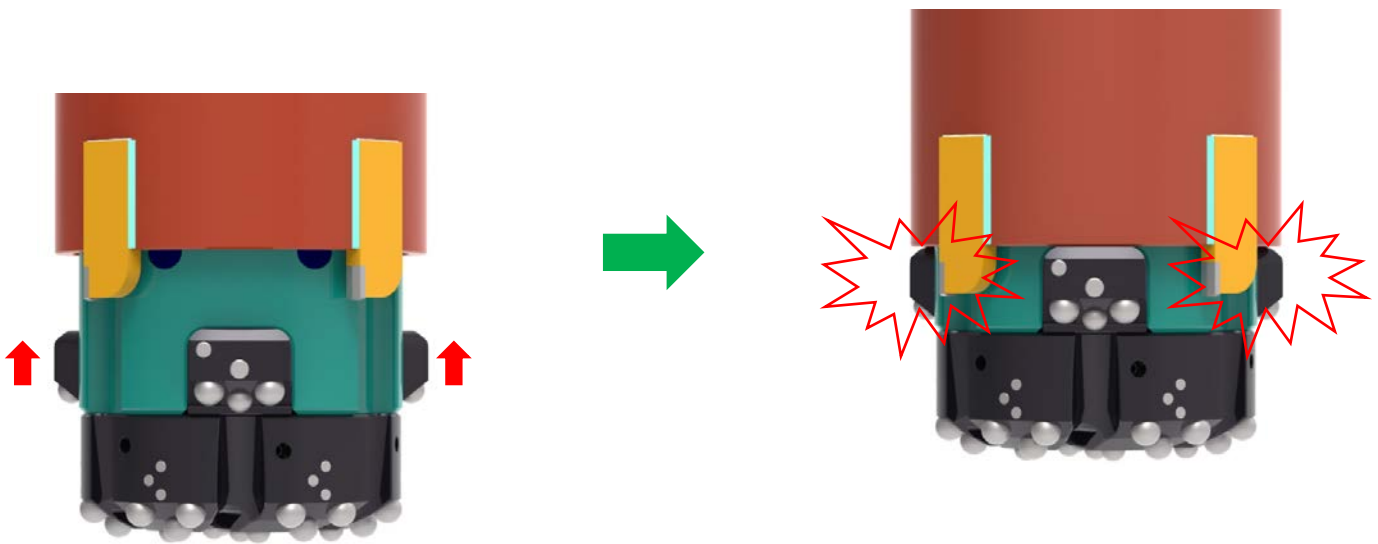




Comments and cautions

DURA WING is for Overburden drilling system,  
We like to follow our instruction to safe usage.

- \* The wings should not to be used for dragging casing up.
  - If we put too much load on the open wings, it can be damaged and may not work properly.

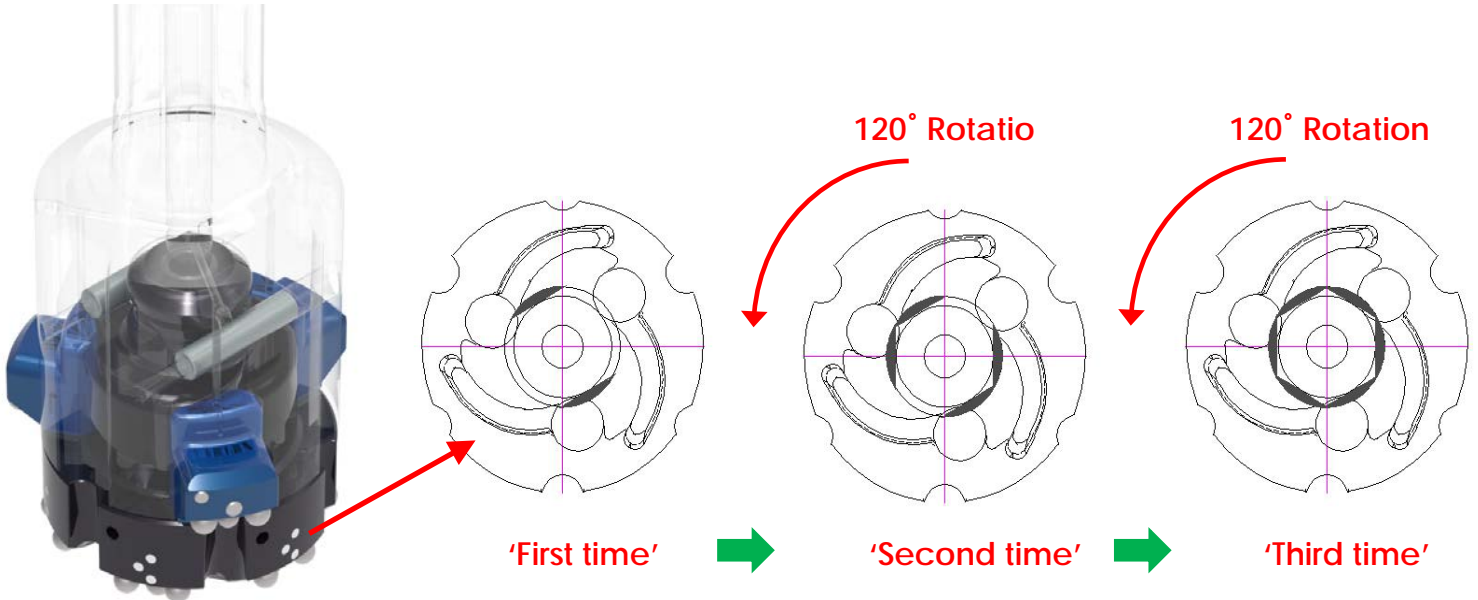




# 21

\* When replacing locking pin, rotate assembly direction of the pilot bit by 120° each time.

- locking pin can have dent because of the vibration pilot bit and locking pin.
- When replacing the new locking pin, if assembled in less dented direction, the operation reliability can be maintained.



\* We recommend to check the locking pin daily.

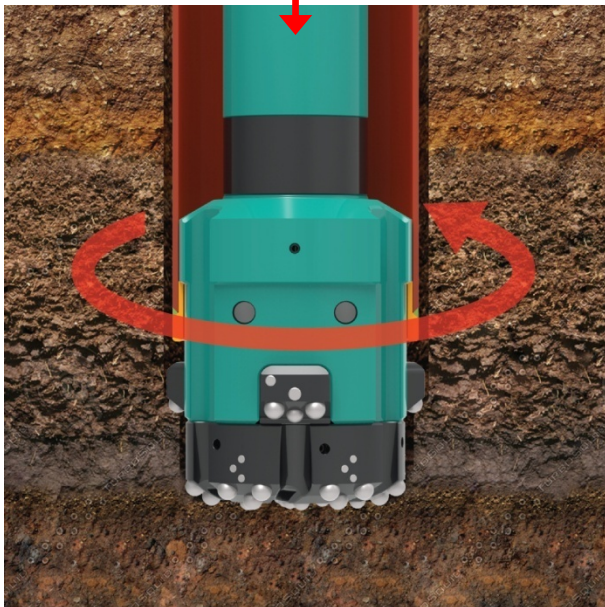


# 22

\* In order to retracting and expanding the wings, the pilot bit need to be contacted at ground.

- when you cleaning the hole, need to feed and contact the ground then rotate the system to open and close.

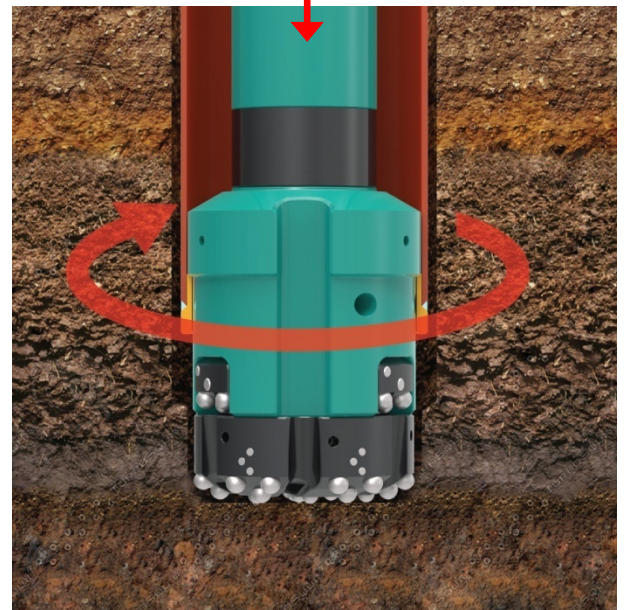
Push down then Rotate



Retracting

Expanding

Push down then Rotate





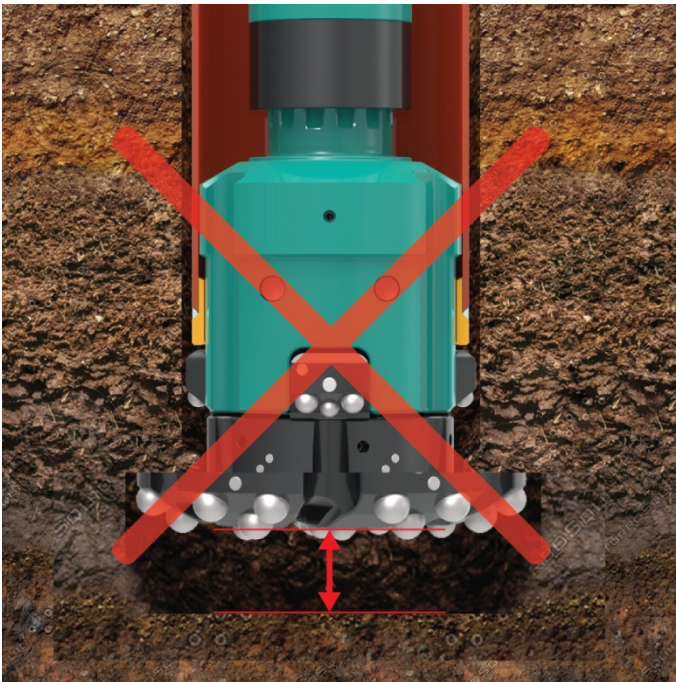
## 23

\* If DURA WING's pilot bit bottom doesn't contact the ground, closing and opening the wing may not be smoothly moving.

- inside drilling hole, pilot bit needed to contact the ground to open and close the wings.

\* There is little bit tolerance between pilot bit and guide device.

So, when we lift the system, the pilot bit drops a little and there will be gap.  
**If there will be gap and the wing may not easily retract and expand.**



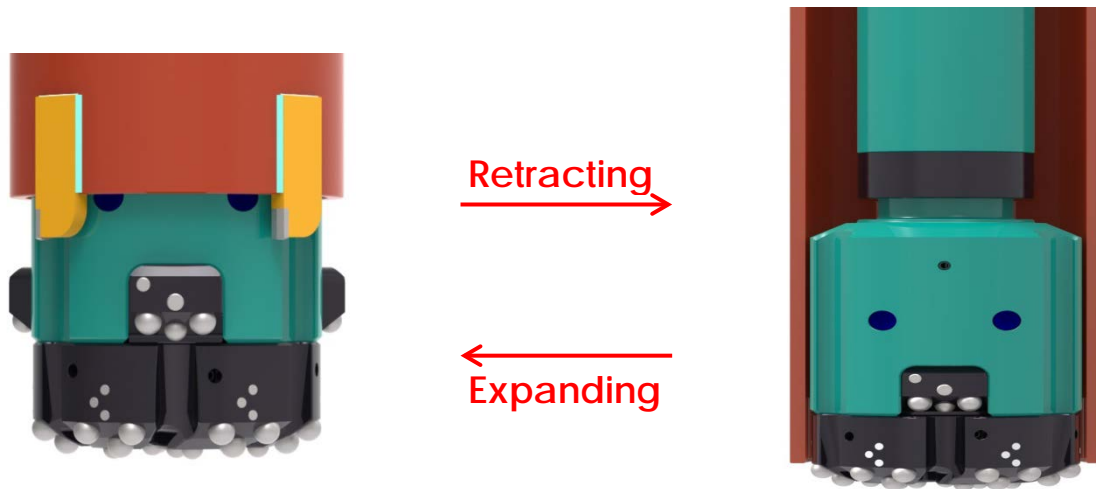


## 24

\* We recommend to set the Air pressure at Maximum **17 bar**.

- The overburden system is getting higher pressure from the bottom since it drills larger diameter than the standard button bit.
- The overburden system can have significant damage if we drill the overburden bit at more than 20bar.

When retracting or expanding wings, Lock the air pressure valve less than  $\frac{1}{2}$ .



- If you want to stop drilling, do not suddenly close all the air valve, but please close the air valve gradually and lift up the system and then stop the air, to prevent sucking the cutting and sludge into the system inside.
  1. Close air valve gradually and until less than  $\frac{1}{2}$  and lift up the hammer little bit.
  2. Feed down the system to contact the ground and retract the wings.
  3. Lift up the string and open the air valve for hole cleaning.





**ÉQUIPEMENT DE FORAGE DU QUÉBEC**

203-5245 GUILLAUME COUTURE

LÉVIS, QUÉBEC, CANADA

TEL. : 418-903-4801